

# Algorithms of Scientific Computing

## Parallelisation Using Space-Filling Curves

Michael Bader

Summer Term 2014



# Parallelisation using Space-filling Curves

## Problem setting:

- “mesh” (2D, 3D, ...) of  $N$  unknowns ( $N \gg 1000$ )
- solve linear system(s) of equations (maybe repeatedly with varying right-hand side)
- in the system, only spatially neighbouring unknowns are coupled

## Parallelisation:

Distribute  $N$  unknowns to  $p$  partitions, such that

- each partition contains the same number of unknowns (*load balancing*)
- for as many unknowns as possible, all neighbours are in the same partition ( $\Rightarrow$  avoids communication between partitions)

# Parallelisation using Space-filling Curves (2)

## Further demand: adaptivity

- add further unknowns (during/depending on intermediate results) or drop unknowns
- (re-)partitioning required to be **fast**:  
must not cost more computation time than going on with a bad load balance
- “shape preserving”: if only few unknowns are added or dropped, the shape of partitions should not change strongly  
⇒ only few unknowns then need to migrate to another partition

⇒ popular strategy: use **space-filling curves**

# Generic Space-filling Heuristic

Bartholdi & Platzman (1988):

1. Transform the problem in the unit square, via a space-filling curve, to a problem on the unit interval
2. Solve the (easier) problem on the unit interval

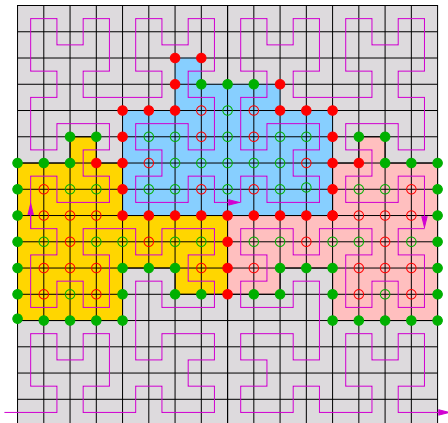
For parallelisation: strategy to determine partitions

1. use a space-filling curve to generate a sequential order on grid cells
2. do a 1D partitioning on the list of cells  
(cut into equal-sized pieces, or similar)

Possible implementations:

1. compute SFC index (inverse mapping) and sort w.r.t. index
2. modify grammar-based traversals

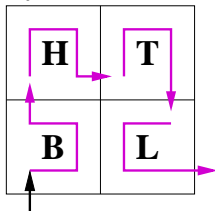
# Hilbert-Curve Partitions on a Cartesian Grid



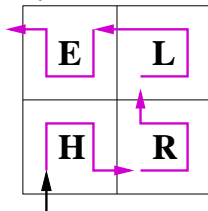
- Hilbert order traversal provides sequential order on grid cells
- Hilbert curve splits vertices into right/left (red/green) set

# Turtle Grammar for Left-Right Classification

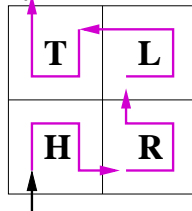
**H:**



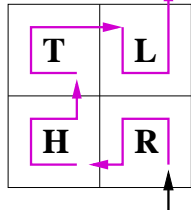
**L:**



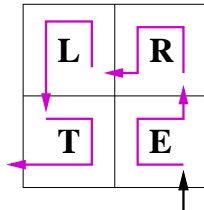
**B:**



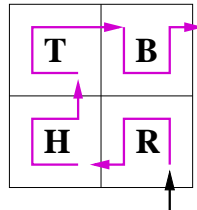
**E:**



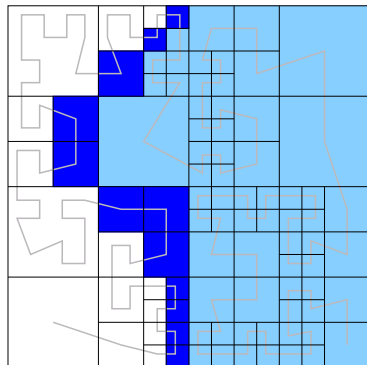
**R:**



**T:**



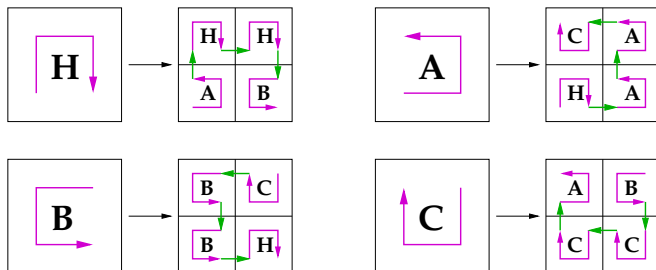
## Example: Hilbert-Curve Partitions on Quadrees



- here: with so-called **ghost cells** (data exchange with neighbours)  
→ processed in identical order in both partitions

# Recall: Grammar to Describe the Hilbert Curve

Construction of the iterations of the Hilbert curve:



## Question:

Can this grammar be used to generate **adaptive** Hilbert orders?

## Problem:

Words generated by the grammar do not allow reproduction of the refinement info!



# A Grammar for Hilbert Orders on Quadrees

- Non-terminal symbols:  $\{H, A, B, C\}$ , start symbol  $H$
- terminal characters:  $\{\uparrow, \downarrow, \leftarrow, \rightarrow, (, )\}$
- productions:

$$H \leftarrow (A \uparrow H \rightarrow H \downarrow B)$$

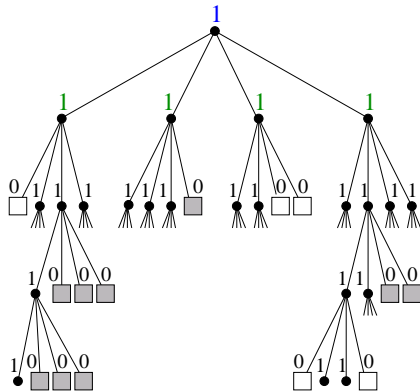
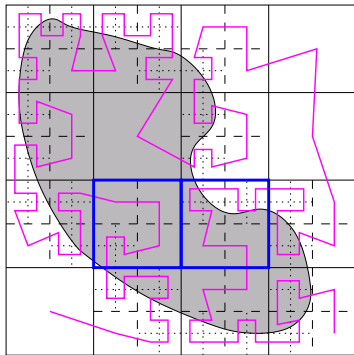
$$A \leftarrow (H \rightarrow A \uparrow A \leftarrow C)$$

$$B \leftarrow (C \leftarrow B \downarrow B \rightarrow H)$$

$$C \leftarrow (B \downarrow C \leftarrow C \uparrow A)$$

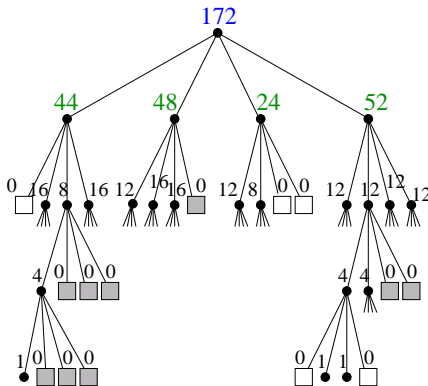
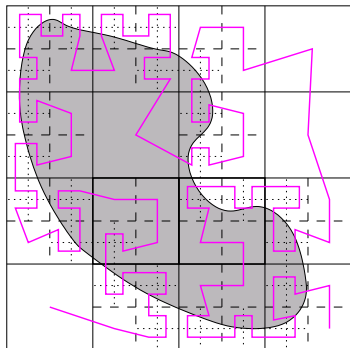
- ⇒ arrows describe the iterations of the Hilbert curve in “turtle graphics”
- ⇒ terminals ( and ) mark change of levels: “up” and “down”
- ⇒ cmp. algorithm in Python script *sfc\_hilbert\_plotter\_adap*

# Hilbert-Order Bitstream-Encoding of a Quadtree



1 1 0 1 ◀ 1 1 1 0 0 0 0 0 0 1 ◀ 1 1 ◀ 1 ◀ 1 ◀ 0 1 1 ◀ 1 ◀ 0 0 1 1 ◀ 1 1 0 1 1 0 1 ◀ 0 0 1 ◀ 1 ◀

# Refinement-Tree Encoding of a Quadtree



172 44 0 16 8 4 1 0 0 0 0 0 16 48 12 16 16 0 24 12 8 0 0 52 12 12 12 12

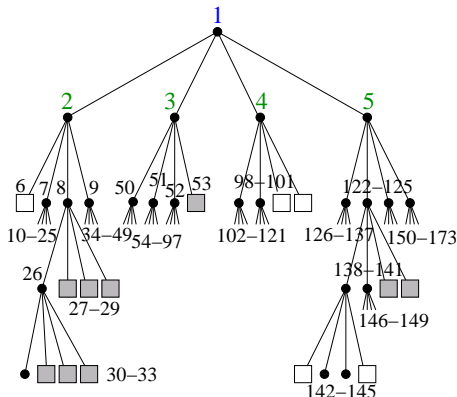
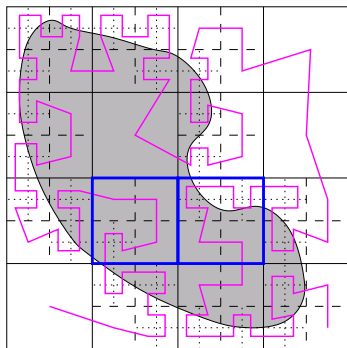
## Refinement-Tree Encoding of a Quadtree (2)

**REFTREE** algorithm for partitioning:

- attributed quadtree with number of leaves/nodes of the subtree for each node
- allows to determine whether a certain node/subtree may be skipped by the current partition (if index of first & last leaf/node are given)
- disadvantage of data structure: required information spread across several locations in the stream  
⇒ may be fixed by modified depth-first order

# Towards Parallelisation

## Refinement-Tree Encoding with Modified Depth-First Order



172 44 48 24 52 0 16 8 16 4 0 0 0 1 0 0 0 ◀◀ 12 16 16 0 ◀◀◀◀ 12 8 0 0 ◀◀◀◀ 12 12 12 12 ◀◀◀◀◀◀

(numbers in the tree represent position of resp. node information in the stream)

# Hölder Continuity of Space-filling Curves

**Definition:** (*Hölder continuous*)

A function  $f$  is called **Hölder continuous with exponent  $r$**  on the interval  $I$ , if a constant  $C > 0$  exists, such that for all  $x, y \in I$ :

$$\|f(x) - f(y)\|_2 \leq C |x - y|^r$$

**Importance for space-filling curves:**

- $|x - y|$  is the distance of the indices
- $\|f(x) - f(y)\|$  is the distance of the image points (in “space”)
- To prove: the Hilbert curve is Hölder continuous with exponent  $r = d^{-1}$ , where  $d$  is the dimension:

$$\|f(x) - f(y)\|_2 \leq C |x - y|^{1/d} = C \sqrt[d]{|x - y|}$$

# Hölder Continuity of the 3D Hilbert Curve

Proof analogous to simple continuity proof:

- given  $x, y \in \mathcal{I}$ ; find an  $n$ , such that  $8^{-(n+1)} < |x - y| < 8^{-n}$
- $8^{-n}$  is the interval length for the  $n$ -th iteration  
 $\Rightarrow [x, y]$  covers at most two neighbouring(!) intervals.
- per construction of the 3D Hilbert curve, the function values  $h(x)$  and  $h(y)$  are in two adjacent cubes of side length  $2^{-n}$ .
- the length of the space diagonal through the two adjacent cubes is  $2^{-n} \cdot \sqrt{1^2 + 1^2 + 2^2} = 2^{-n} \cdot \sqrt{6}$ , hence:

$$\begin{aligned}\|h(x) - h(y)\|_2 &\leq 2^{-n}\sqrt{6} = (8^{-n})^{1/3}\sqrt{6} = \left(8^{-(n+1)}\right)^{1/3} 8^{1/3}\sqrt{6} \\ &\leq 2\sqrt{6}|x - y|^{1/3} \quad \text{q.e.d.}\end{aligned}$$

# Hölder Continuity and Parallelisation

- for the Hilbert curve (also Peano curve and all connected, recursive SFC), we have:

$$\|f(x) - f(y)\|_2 \leq C \sqrt[d]{|x - y|}$$

- relates the distance  $|x - y|$  between indices to the distance  $\|f(x) - f(y)\|$  of (mesh) points
  - index distance  $|x - y|$  equivalent to area covered by the corresponding curve section → **parameterised by area**
  - leads to relation between volume (number of grid cells/points) and extent (e.g. radius) of a partition
- ⇒ Hölder continuity gives a quantitative estimate for **compactness** of partitions