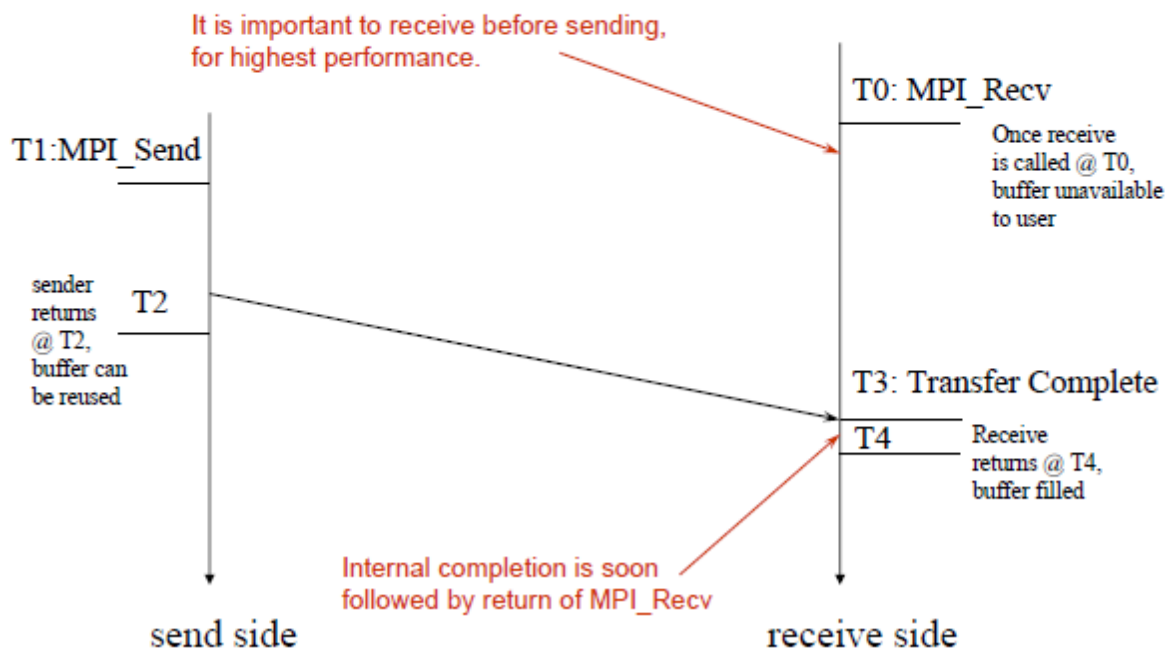
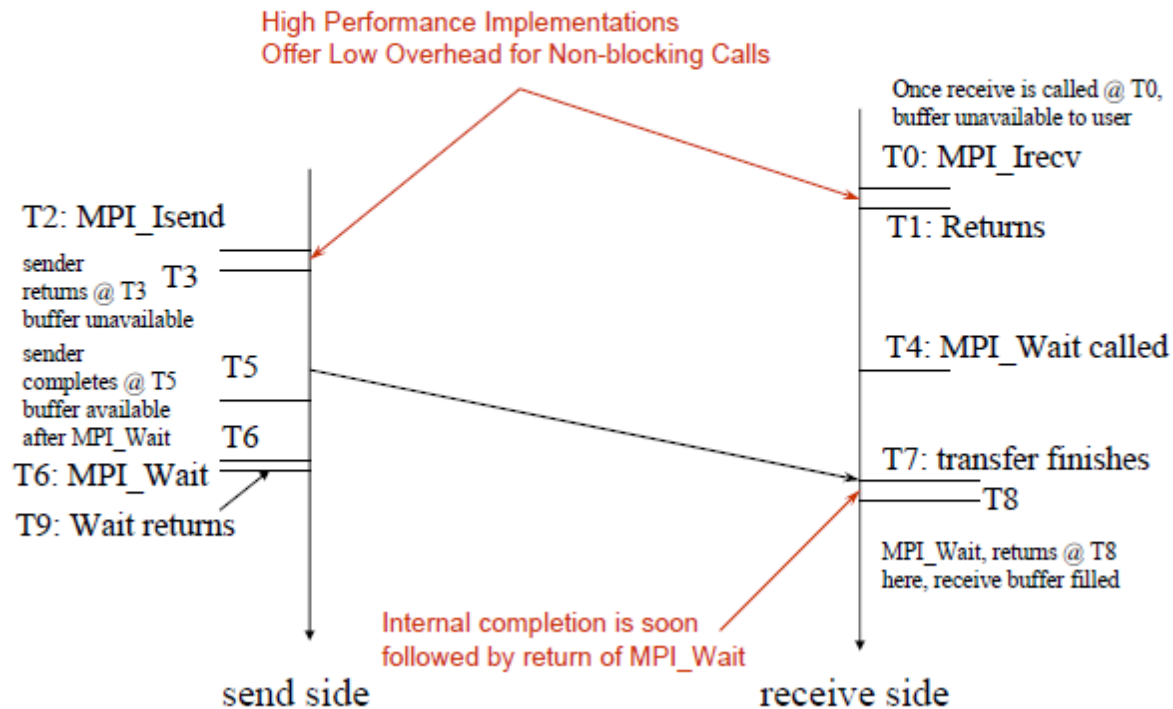


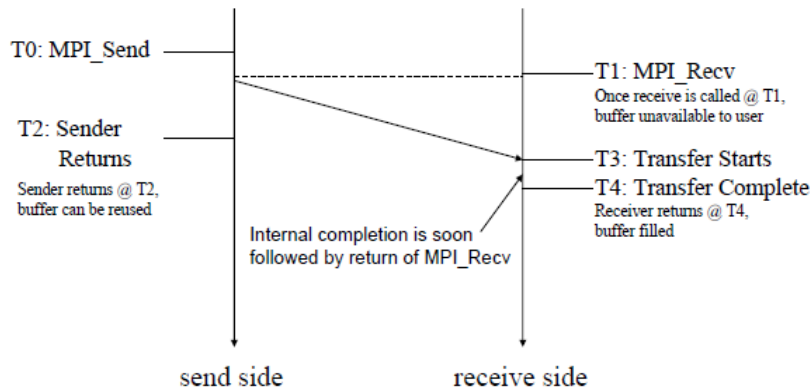
## Blocking Send-Receive Diagram (Receive before Send)



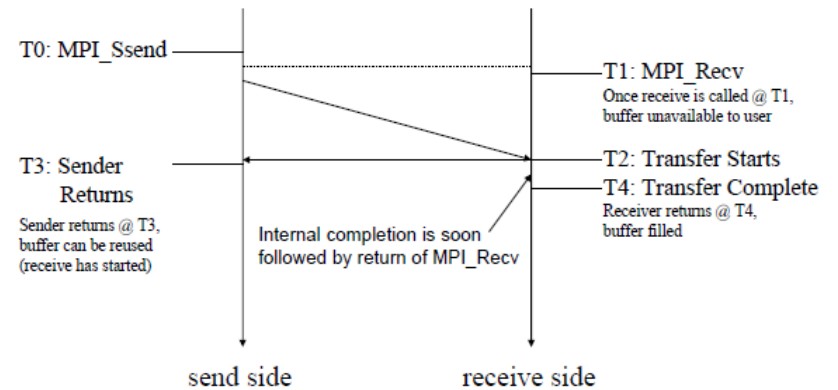
# Non-Blocking Send-Receive



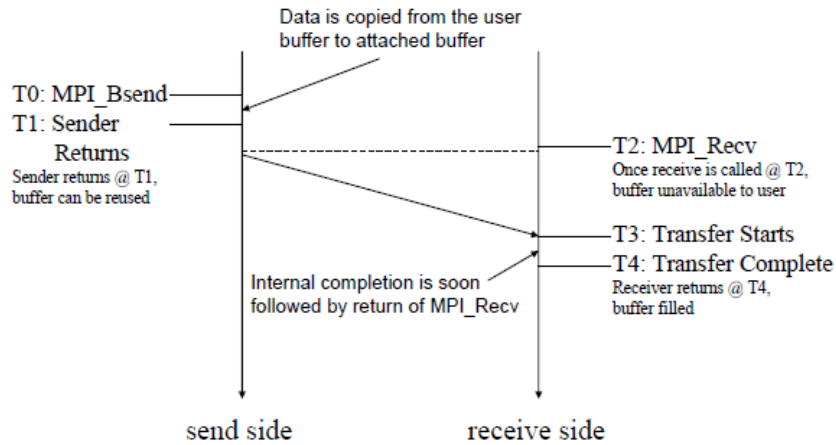
## Standard Send-Receive



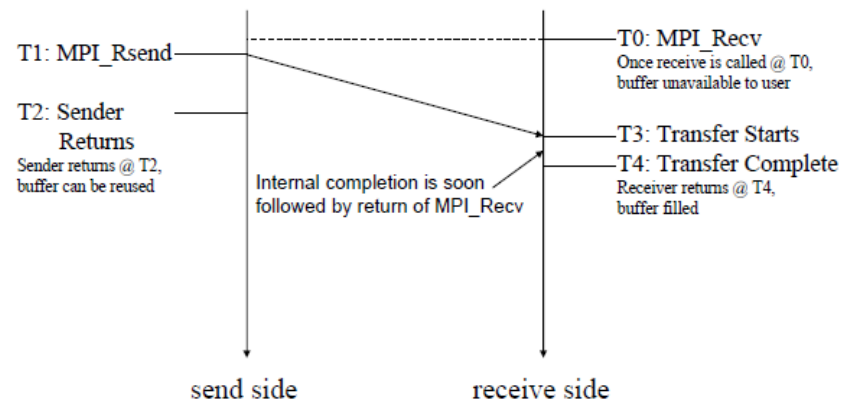
## Synchronous Send-Receive



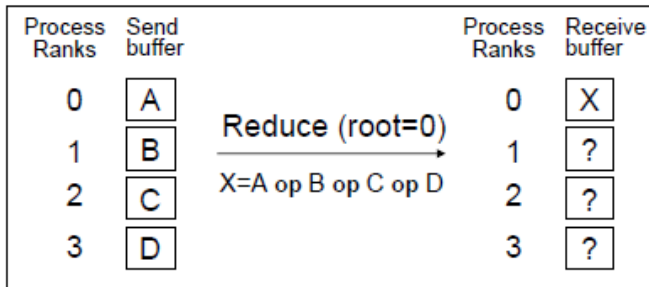
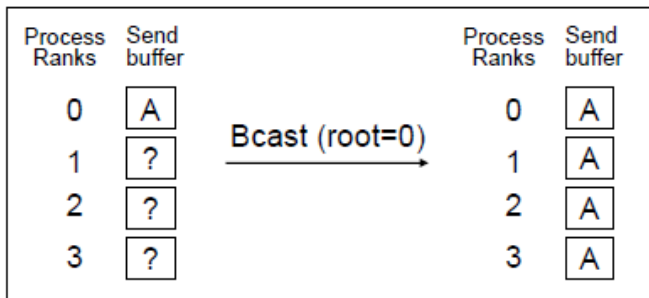
## Buffered Send-Receive



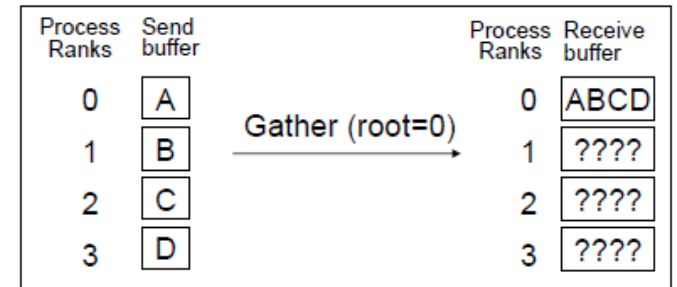
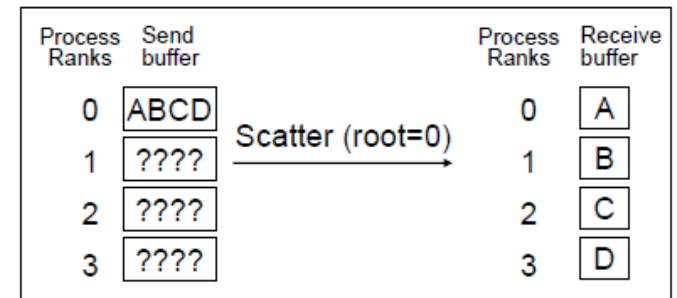
## Ready Send-Receive



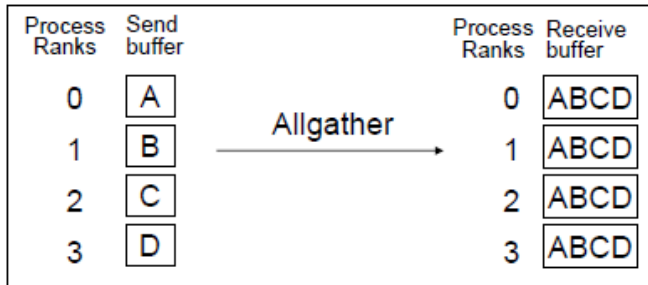
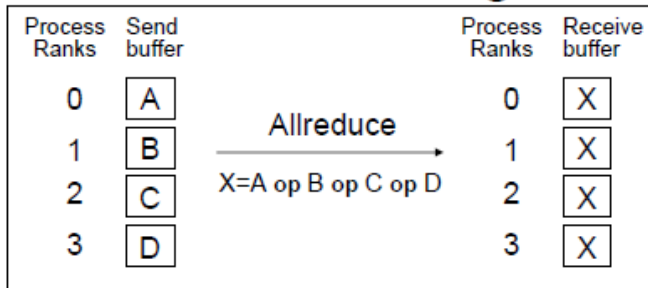
## Broadcast and Reduce



## Scatter and Gather



## Allreduce and Allgather



## Alltoall and Scan

